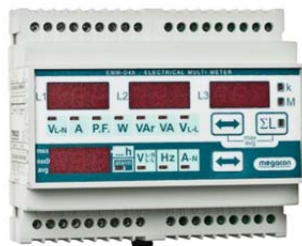








Grundprogrammering EMM



1. Tryck   samtidigt "Set Up" visas på display.
2. Tryck  "CT" visas på display samt 4 siffror.
3. Tryck  för att öka och  för att minska. Omsättning skall skrivas in t.ex. $400/5A = 80$. 80 skall programmeras.
4. Tryck  "UT" visas. Avvakta ca 5 sekunder utan att trycka så återgår instrument till mätläge.